

ARV Therapies and Therapeutic Strategies
REPORTING ON EACS 2015
**Comprehensive Expert Review
and Discussion of Key Presentations**

An Independent CME Activity Jointly Provided by Postgraduate Institute for Medicine and ViralEd, Inc.
The coverage is not sanctioned by the conference organizers and is not an official part of the conference proceedings.

**Week 48 Results of the Randomized,
Multicenter Maraviroc Switch Study (MARCH)**

S.L. Pett, on behalf of the MARCH Study Group

Abstract BPD1/5

Maraviroc Switch (MARCH) Study

• **Eligibility Criteria**

- HIV-1-infected aged ≥ 18 yrs
- 2N(t)RTI + PI/r >24 wks
- VL <200 c/mL for >24 wks
- No known resistance
- R5 tropic determined by proviral DNA (in triplicate; FPR cut-off 10%)

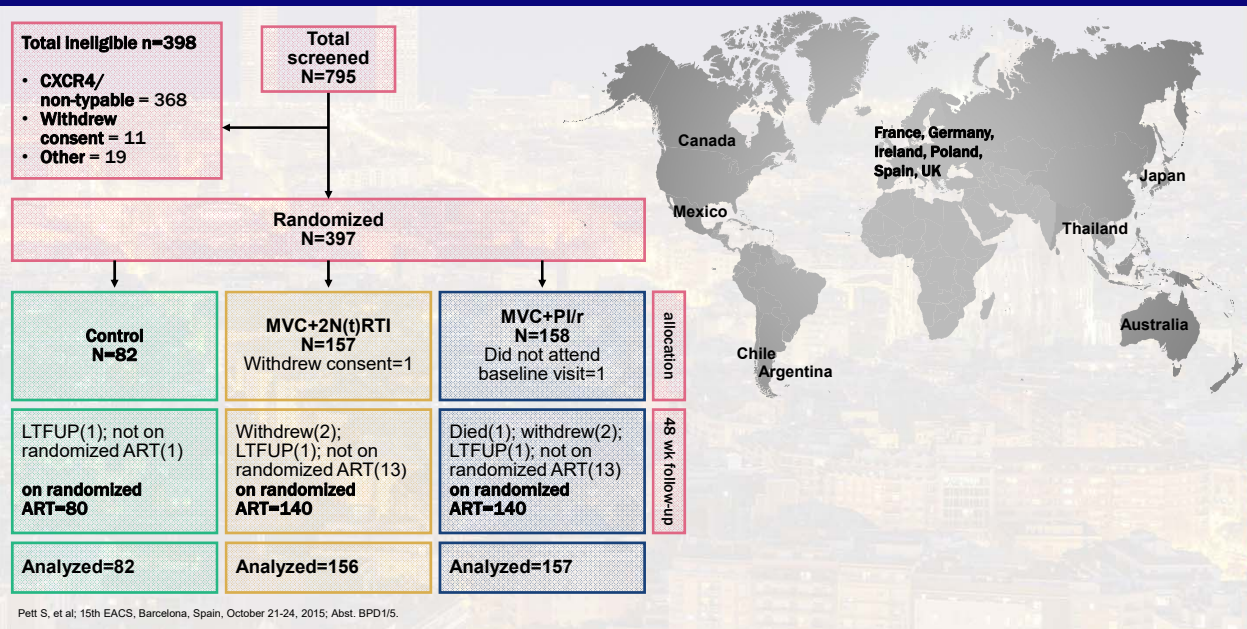
Randomization 1:2:2
of eligible patients

Arm I: no change
1/5 (≈ 76)

Arm II: replace PI/r with MVC
2/5 (≈ 152)

Arm III: replace N(t)RTI with MVC
2/5 (≈ 152)

MARCH: Participant Disposition Over 48 Weeks



MARCH: Baseline Characteristics

Characteristic	Control n=82	MVC+2N(t)RTI n=156	MVC+PI/r n=157	Total N=395
Female, n (%)	20 (24.4)	35 (22.4)	35 (22.3)	90 (22.8)
Mean age in years (SD)	43.6 (10.5)	43.7 (10.5)	42.7 (9.6)	43.3 (10.1)
Main Ethnicity, n (%)				
African heritage	0 (0.0)	6 (3.9)	4 (2.6)	10 (2.5)
Asian	9 (11.0)	10 (6.4)	15 (9.6)	34 (8.6)
Australian Aboriginal	0 (0.0)	0 (0.0)	1 (0.6)	1 (0.3)
Caucasian	42 (51.2)	99 (63.5)	80 (51.0)	221 (56.0)
Hispanic or Latino	31 (37.8)	40 (25.6)	56 (35.7)	127 (32.2)
Other	0 (0.0)	1 (0.6)	1 (0.6)	2 (0.5)
CDC category C, n (%)	21 (25.6)	36 (23.1)	30 (19.1)	87 (22.0)
Baseline HIV RNA <50cp/mL (%)	96.3	96.8	95.5	96.2
Mean CD4+ T cells/μL (SD)	634.8 (244.5)	596.3 (253.3)	637.6 (252.7)	617.0 (251.2)
Mean ART duration in yrs (SD)	6.3 (4.5)	5.7 (3.8)	6.4 (4.4)	6.1 (4.2)

Pett S, et al; 15th EACS, Barcelona, Spain, October 21-24, 2015; Abst. BPD1/5.

MARCH: Baseline Antiretrovirals and Metabolic Parameters

Characteristic	Control n=82	MVC+2N(t)RTI n=156	MVC+PI/r n=157	Total N=395
TDF + FTC/3TC (%)	51(62)	108 (69)	108 (69)	267 (68)
ABC/3TC (%)	18 (22.0)	19 (12.2)	20 (12.7)	57 (14.4)
AZT/3TC (%)	6 (7.3)	20 (12.8)	17 (10.8)	43 (10.9)
Other (%)	7 (8.5)	9 (5.6)	12 (7.6)	28 (7.1)
ATV/r (%)	27 (32.9)	58 (37.2)	55 (35.0)	140 (35.4)
LPV/r (%)	29 (35.4)	33 (21.2)	50 (31.9)	112 (28.4)
DRV/r (%)	13 (15.9)	32 (20.5)	20 (12.7)	65 (16.5)
SQV/r (%)	9 (11.0)	24 (15.4)	22 (14.0)	55 (13.9)
FPV/r (%)	4 (4.9)	8 (5.1)	10 (6.4)	22 (5.6)
IDV/r (%)	0 (0.0)	1 (0.6)	0 (0.00)	1 (0.3)
Total Cholesterol[*]	4.87 (1.1) (n=79)	4.89 (1.04) (n=146)	4.89 (1.01) (n=155)	4.89 (1.04) (n=380)
LDL[*]	2.82 (0.96) (n=79)	2.87 (0.86) (n=142)	2.86 (0.94) (n=150)	2.86 (0.91) (n=371)
HDL[*]	1.21 (0.29) (n=79)	1.26 (0.39) (n=146)	1.26 (0.41) (n=155)	1.25 (0.38) (n=380)
TGs[*]	1.91 (0.99) (n=79)	1.77 (0.93) (n=144)	1.98 (1.4) (n=152)	1.88 (1.16) (n=375)
FRAM (10yr CVD %)(SD)	6.9 (7.2)(n=78)	6.3 (5.6)(n=144)	6.84 (6.2)(n=155)	6.6 (6.2)(n=377)

*mean mmol/L(SD)

Pett S, et al; 15th EACS, Barcelona, Spain, October 21-24, 2015; Abst. BPD1/5.

MARCH Study: Primary Endpoint

Analysis	Arm	% VL <200 c/mL	Difference (%)	95% CI
Intention to treat	Control	97.6	Reference	
	MVC+2N(t)RTI	93.6	-4.0	(-9.0, 2.2)
	MVC+PI/r	84.1	-13.5	(-19.8, -5.8)
Non-completion=failure	Control	96.3	Reference	
	MVC+2N(t)RTI	88.5	-7.9	(-14.1, -0.4)
	MVC+PI/r	80.3	-16.1	(-23.1, -7.6)
Per protocol	Control	98.8	Reference	
	MVC+2N(t)RTI	98.6	-0.2	(-3.8, 4.4)
	MVC+PI/r	90.0	-8.8	(-14.2, -2.1)

Pett S, et al; 15th EACS, Barcelona, Spain, October 21-24, 2015; Abst. BPD1/5.

MARCH: Resistance Results

ARM	Confirmed Virological Failure	Protease and RT Sequencing Results	Tropism at Viral Failure
Control	Week 36	K103KN	CCR5
	Week 12	M41L,T215E	CCR5
	Week 12	M184V; K101E,Y181C,G190A	CCR5
MVC+2N(t)RTI	Week 12	L10I; K65R; V106I	TEST FAILED
	Week 36	L10I, A71V; M184V	CCR5
	Week 12	L90M; L10I, A71V; M184MV	CCR5
	Week 48	none	CCR5
	Week 48	L10I	TEST FAILED
	Week 24	I50V; L10I, L33FL	CXCR4
MVC+PI/r	Week 4	none	CCR5
	Week 36	none	CXCR4
	Week 12	none	CCR5
	Week 36	A62V, T215S	CCR5
	Week 48	none	CXCR4
	Week 48	none	CCR5
	Week 36	K20I	TEST FAILED
	Week 12	none	CCR5
	Week 12	none	CCR5
	Week 12	E138A	CCR5
	Week 12	V32AV	TEST FAILED
	Week 12	none	TEST FAILED
Week 36	none	CCR5	
Week 48	L10I	CCR5	

Pett S, et al; 15th EACS, Barcelona, Spain, October 21-24, 2015; Abst. BPD1/5.